



Catalog 2022

*One company fits all.*  
**DE BONNET**

# XPLOR WORKWEAR

**Xplor develops and manufactures workwear and uniforms that meet high standards of comfort, functionality and durability**

## **DURABLE DESIGN**

Workwear and uniforms must be durable and look great day after day. Specialist knowledge of materials and design has made our products stand out in the market for professional workwear - and durable products with a long service life have been our hallmark through all the years.

## **RESPONSIBLE PRODUCTION**

It is our goal to promote more environmentally friendly, circular and resource efficient products.

Xplor is bluesign® system partner. The partnership is an important part of our work to ensure accountability and transparency throughout the value chain.

## **CERTIFIED**

All our products meet the minimum requirements of OEKO-TEX® in material selection, and the majority of the finished products are certified STANDARD 100 by OEKO-TEX®.

## **GREAT FIT IN ALL SIZES**

An extensive stock range in sizes XS-6XL, some styles from XXS-8XL, ensures that all employees can be dressed nicely - whatever their size.

## **LAUNDRY-READY**

The majority of the range is approved by the laundry industry for rental and laundry schemes.

## **SECTOR SPECIFIC DESIGN**

Our design focuses on sector-specific needs. We achieve this by being responsive to the market, maintaining close dialogue with our supply chain, business partners and end-users. Every garment is carefully designed based on employees' requirements and patterns of movement.

## **STOCK RANGE WITH REPLENISHMENT GUARANTEE**

Our stock range enables next-day delivery and we grant a 5-year replenishment guarantee, so that companies can maintain the same work uniform for many years to come.

## **BESPOKE MANUFACTURING**

In close collaboration with our customers, we design and develop both stand-alone products and complete clothing concepts. Production starts at 400 items.

## **LOGO PRINTING**

We offer flexible logo printing and express delivery with a 5-day turnaround time.





# MONO

## Durable product range in recycled materials

The Mono range consists of outerwear produced in durable and recycled polyester, which provides optimal weather protection and comfort.

### CIRCULAR DESIGN

The products are designed to be part of the circular textile industry, where the product at the end of its life can be further processed for recycling. The products are made of 100% recycled polyester in both membrane and outer fabric, so they can be recycled.

To increase the products' recyclability, we have limited the number of material types. Metal parts have been removed from i.a. press studs and string stoppers. Drawstring holes that normally contain metal have been replaced with a sewn drawstring hole.

Reflectors, which are necessary to meet traffic safety requirements, are placed so that they can be easily removed when the product is worn out.

### CERTIFIED MATERIALS

The recycled polyester in both outer material and membrane is GRS-certified. Global Recycled Standard is an international full product standard for products made of recycled materials. The standard sets requirements for documented tracking of the recycled content throughout the chain, and includes requirements for social, environmental and chemical practices in the production.













# MONO

## **IMPROVED DURABILITY**

The Mono range is also characterized by a high tear and abrasion resistance. The products are Martindale-tested with up to 20,000 cycles.

The focus of the design has been to extend the life of the products while optimizing comfort and functionality.

## **LESS RESOURCE USE**

Material use has been reduced by 15-26% compared to similar garments. This means that the products require fewer resources to produce and emit less CO<sub>2</sub>.

Due to the lower weight, the laundry cost is reduced accordingly.

## **OPTIMAL WEATHER PROTECTION**

With the Mono range, employees are protected against wind and weather all year round. The products are wind and waterproof, breathable with fully taped seams, and have a water-repellent finish.

## **INCREASED TRAFFIC SAFETY**

Reflectors are placed optimally in relation to the traffic rules for cyclists and pedestrians.



## **ZIP-IN COMPATIBILITY**

The jackets have inside zips in matching lengths that are compatible with Xplor's inner jackets



# Functionality and Design

The Mono jackets have been developed with a focus on recyclability, traffic safety and optimal weather protection.

## DETACHABLE HOOD

The hood can be tucked into the collar and integrated in the front edge of the collar.

## NO METAL PARTS

Adjustable collar and bottom with string stoppers without metal parts.

## TWO-WAY ZIP WITH REFLECTORS

Chin protect on top of zip.

## IMPROVED FIT

Shaped raglan sleeves, inside adjustable waistband, adjustable bottom.

## VENTILATION

Zip with mesh under armpit.

## BLACKBOARD YOKE

Space for logo and with inside strap for ID badge under yoke.

## ZIP POCKETS UNDER WELT

Easy-grip zip pullers and chest pocket in waterproof material.

## TRAFFIC SAFE REFLECTORS

On the cuff, zip, right front piece and left back piece at seam.

## WATER BREAKER

Extra protection at hem to prevent water penetration.

## LOGO PLACEMENT

Inside zip for flexible placement of logo.



# Mono Shell Jackets

Durable shell jackets in recycled materials. The jackets are windproof and waterproof, breathable, water-repellent, and with fully taped seams.

## WOMEN'S MONO PARKA SHELL JACKET

Parka shell jacket for women with a feminine cut and a length that goes to the middle of the thighs. It provides extra good protection against wind and weather.

### Zip-In Options:

Pile Jacket, style 4800

Quilted Jacket, style 5200

Fleece Jacket, style 5400

(Separate purchase)

### Women's Mono Parka Shell Jacket

Style 99084 | XXS-6XL | Female cut



navy  
5000



**Outer material:** 100% recycled polyester\* | **Finish:** BIONIC-FINISH®ECO (DWR)

**Lining:** 100% polyester | **Membrane:** 100% recycled polyester\*

\*GRS-certified polyester | **Seam:** Fully taped | **Water Column Pressure:** 15,000 mm

**Breathability:** 8,000 g/m<sup>2</sup>/24H | **Wind protection:** 5 / 5

**Laundry-ready** | **Replenishment guarantee**





## UNISEX MONO SHELL JACKET

Shell jacket for men and women with a length that covers the hip and protects against water penetration.

### Zip-In Options:

Pile Jacket, style 4900

Quilted Jacket, style 5100

Fleece Jacket, style 5300

Softshell Jacket, style 5500

Quilted Waistcoat, style 5900

(Separate purchase)

### Unisex Mono Shell Jacket

Style 99081 | XXS-8XL | Slim fit



navy  
5000

**Outer material:** 100% recycled polyester\* | **Finish:** BIONIC-FINISH®ECO (DWR)

**Lining:** 100% polyester | **Membrane:** 100% recycled polyester\*

\*GRS-certified polyester | **Seam:** Fully taped | **Water Column Pressure:** 15,000 mm

**Breathability:** 8,000 g/m<sup>2</sup>/24H | **Wind protection:** 5 / 5

**Laundry-ready** | Replenishment guarantee





# Mono Shell Trousers

The trousers are available with normal and extra long leg length.  
Both styles have an adjustable length so that the trousers can be shortened.



**Unisex Mono Shell Trousers**  
Style 95580 | XXS-8XL | Slim fit



navy  
5000



**Unisex Mono Shell Trousers Extra Long**  
Style 95580-1 | XXS-8XL | Slim fit



navy  
5000

**Outer material:** 100% recycled polyester\* | **Finish:** BIONIC-FINISH®ECO (DWR)  
**Lining:** 100% polyester | **Membrane:** 100% recycled polyester\*  
**\*GRS-certified polyester** | **Seam:** Fully taped | **Water Column Pressure:** 15,000 mm  
**Breathability:** 8,000 g/m<sup>2</sup>/24H | **Wind protection:** 5 / 5  
**Laundry-ready** | **Replenishment guarantee**



# Functionality and Design

The Mono shell trousers have a slimmer and improved fit. Reflectors are strategically placed for enhanced traffic safety.

## NO METAL PARTS

Elasticated and adjustable waistband with tie cord and string stopper without metal.

## ZIP POCKETS UNDER WELT

Easy-grip zip pullers.

## IMPROVED FIT

Slim fit style with slimmer thighs and leg width, and shaped knees.

## REFLECTIVE PANEL

Reflectors at side seam over zip.

## TWO-WAY ZIP

Two-way zip for quick dressing and undressing.

## TRAFFIC SAFE REFLECTORS

Reflector on right front piece and left back piece at seam.

## ADJUSTABLE LENGTH

The trousers can be shortened 5 cm without changing the length of the zip.



# SUPPLIER TO THE PUBLIC SECTOR

## **Xplor is the leading supplier of outerwear to the Danish municipalities**

Xplor supplies an extensive range of outerwear to the public sector.

The products have been developed with a responsible, holistic approach that includes eco-friendly, circular and resource-efficient products while also delivering financial savings.

Led by extensive market research, our garments are developed to meet the requirements of public sector workers' specific job functions.

The needs of different public sector professionals and employee groups vary greatly, from municipal parking attendants and town hall employees to elderly care and childcare, gardening and other technical roles.

For people in roles such as home care, who cycle between workplaces, outerwear has been specifically developed for employees who cycle. There is space for a cycle helmet under the hood; the sleeve length has been adapted for sitting on a bicycle with outstretched; sleeves and legs are adjustable for enhanced comfort, and there are zips for ventilation.









Xplor uses BIONIC-FINISH@ECO.  
The impregnation is water-repellent,  
dirt-repellent, and free from fluorides.



# Functionality and Design

Care shell jackets are developed for among others cycling staff in the public sector and their day-to-day work activities.

## DETACHABLE HOOD

Large and detachable hood with room for a bicycle helmet.

## ZIP-IN COMPATIBLE

Extra zips to attach an inner jacket.

## BIKE-FRIENDLY

The length and width of the jacket makes it particularly suitable for cycling staff.

## TWO-WAY ZIP

Two-way zip at front under storm flap, with water barrier.

## REFLECTORS

Reflectors on front, back and sleeves for enhanced traffic safety.

## ZIP POCKETS

Zip pockets with key strap and inside pocket with zip.

## ADJUSTABLE

Adjustable waist and hem.

## LOGO PLACEMENT

Inside zip for flexible placement of logo.

## CUFFS

Adjustable sleeves with elasticated inner cuffs.





# Care Shell Jackets

Waterproof, windproof and breathable shell jackets with fully taped seams. With a large selection of colours, the Care shell jacket offers the most 3-in-1 combinations.

## DETAILS

### Unisex Zip-In Options:

- Pile jacket, style 4900
- Quilted Jacket, style 5100
- Fleece Jacket, style 5300
- Softshell Jacket, style 5500
- Quilted Waistcoat, style 5900

### Women's Zip-In Options:

- Pile Jacket, style 4800
- Quilted Jacket, style 5200
- Fleece Jacket, style 5400
- (Separate purchase)



### Care Shell Jacket Unisex

Style 99045-4 | XS-6XL | Regular fit



black	navy	red	aqua	lime	wine
9000	5000	4000	6050	6020	2100

### Care Shell Jacket Women

Style 99044-4 | XS-6XL | Female cut



black	navy	red	aqua	lime
9000	5000	4000	6050	6020

**Outer material:** 100% polyester | **Finish:** BIONIC-FINISH@ECO (DWR)

**Lining:** 100% polyester | **Membrane:** PU | **Seam:** Fully taped

**Water column pressure:** 20,000 mm | **Breathability:** 8,000 g/m<sup>2</sup>/24H | **Wind protection:** 4 / 5

**Laundry ready** | Replenishment guarantee



# Waterproof Pants

Waterproof, windproof and breathable pants with fully taped seams, full-length side zip, and reflective details.

## DETAILS

The pants are available with normal and extra long length

Elasticated drawstring waist

Safety press studs at waist

Full-length side zips

Zip pockets

Shaped knees

Reflective piping in side seams and across legs

Adjustable leg width and length

Adjustable leg length, so the pants can be shortened



### Waterproof Pants Extra Long Unisex

Style 95541-1 | XS-6XL | Regular fit



navy 5000  
black 9000

### Waterproof Pants Unisex

Style 95541 | XS-6XL | Regular fit



black 9000  
navy 5000  
red 4000

**Outer material:** 100% polyester | **Finish:** BIONIC-FINISH®ECO (DWR)

**Lining:** 100% polyester | **Membrane:** PU | **Seam:** Fully taped

**Water column pressure:** 20,000 mm | **Breathability:** 8,000 g/m<sup>2</sup>/24H | **Wind protection:** 4 / 5

**Laundry ready | Replenishment guarantee**









# Be Seen in the Dark



**Mono Hi-Vis hood for style 99084**

Style 9280 | XXS-6XL

**Mono Hi-Vis hood for style 99081**

Style 9281 | XXS-8XL

**Quality:** 100% polyester, PU coating  
OEKO-TEX® certified fabric



**Mono reflective hood for style 99084**

Style 9180 | XXS-6XL

**Mono reflective hood for style 99081**

Style 9181 | XXS-8XL

**Quality:** 100% polyester, PU reflective coating  
OEKO-TEX® certified fabric



**Reflective hood for style 99044-4**

Style 944 | XS-6XL

**Reflective hood for style 99045-4**

Style 945 | XS-6XL

**Quality:** 100% polyester, PU reflective coating  
OEKO-TEX® certified fabric

# INNER JACKETS

**Compatible inner and outer jackets provide plenty of opportunity to put together a 3-in-1 jacket according to the customer's wishes and needs**

Xplor offers inner jackets in quilt, fleece, softshell and pile, which in themselves are warm and insulating. At the same time, they zip right in to a selection of Xplor's shell jackets. The Zip-In compatibility allows for more choice of options, so employees get a jacket that suits the weather and work situation.



## UNISEX STYLES

1. Softshell Jacket Unisex, black, style 5500
2. Fleece Jacket Unisex, black, style 5300
3. Fleece Jacket Unisex, navy, style 5300
4. Pile Jacket Unisex, black, style 4900
5. Quilted Jacket Unisex, black, style 5100
6. Quilted Jacket Unisex, red, style 5100
7. Quilted Waistcoat Unisex, black, style 5900

## WOMEN'S STYLES

8. Fleece Jacket Women, black, style 5400
9. Fleece Jacket Women, navy, style 5400
10. Pile Jacket Women, black, style 4800
11. Quilted Jacket Women, black, style 5200
12. Quilted Jacket Women, red, style 5200



# Quilted jackets and waistcoat

Quilted jackets and waistcoat in durable rip-stop fabric with padded fleece lining, and a woven dirt-repellent surface.

## DETAILS

Wind-repellent, water-repellent and the soft fleece on the inside keeps the body warm

Reflective trim on chest, sleeves and back for enhanced visibility

Pockets with zip

Elasticated cuffs and edge at waist

The women's style can be zipped into the shell jackets: style 99044-4 and 99084

The unisex style can be zipped into the shell jackets: style 99045-4, 40101-4 and 99081



### Quilted Jacket Women

Style 5200 | XS-6XL | Female cut



black	red
5000	4000





**Quilted Jacket Unisex**

Style 5100 | XS-6XL | Regular fit



black    red  
5000    4000

**Quilted Waistcoat Unisex**

Style 5900 | XS-6XL | Regular fit



black  
9000

**Outer material:** 100% polyester, mini rip-stop | **Finish:** BIONIC-FINISH®ECO (DWR)

**Lining (body):** 100% polyester fleece | **Lining (sleeves):** 100% polyester taffeta

**Padding:** 100% polyester | **Laundry ready** | **Replenishment guarantee**



# Fleece jackets

Fleece jackets in thick anti-pilling fleece to prevent pilling over time, with lined raglan sleeves that allow for easier movement.



## Fleece Jacket Women

Style 5400 | XS-6XL | Female cut



navy    black  
5000    9000

## Fleece Jacket Unisex

Style 5300 | XS-6XL | Regular fit



navy    black  
5000    9000

**Outer material:** 100% polyester, anti-pilling

**Lining:** 100% polyester taffeta in sleeve and front

**Laundry ready | Replenishment guarantee**



## DETAILS

Lined raglan sleeves

Reflective trim on chest, sleeves and back for enhanced visibility

Pockets with zip

Elasticated cuffs and edge at waist

The women's style can be zipped into the shell jackets: style 99044-4 and 99084

The unisex style can be zipped into the shell jackets: style 99045-4, 40101-4 and 99081



# Softshell jacket

Water-repellent softshell jacket with brushed fleece inside.  
Ideal as a transitional jacket or as an inner layer inside a shell jacket.

## DETAILS

Reflective trim on chest, sleeves and back for enhanced visibility

Pockets with zip

Elasticated cuffs and edge at waist

The jacket can be zipped into the shell jackets: style 99045-4, 40101-4 and 99081

### Softshell Jacket Unisex

Style 5500 | XS-6XL | Regular fit



black  
9000



**Softshell:** 94% polyester, 6% elastane  
**Finish:** BIONIC-FINISH®ECO (DWR)  
**Membrane:** TPU | **Water column pressure:** 3,000 mm  
**Laundry ready** | **Replenishment guarantee**





# Pile Jackets

Soft and warm pile in recycled and OEKO-TEX® certified fabric.  
A good alternative to fleece or quilt when the weather gets cold.



**Pile Jacket Women**  
Style 4800 | XXS-6XL | Regular fit



black  
9000

**Pile Jacket Unisex**  
Style 4900 | XXS-8XL | Regular fit



black  
9000

**Outer material:** 100% recycled polyester\* | **Lining:** 100% polyester

**Fabric:** OEKO-TEX® certified

\*GRS-certified polyester | Replenishment guarantee





## DETAILS

Extended hem and stretch lining for increased mobility

Long sleeves with elastic edge

Pockets with zip

Woven pocket with space for logo

The women's style can be zipped into the shell jackets: style 99044-4 and 99084

The unisex style can be zipped into the shell jackets: style 99045-4, 40101-4 and 99081



# Waterproof Winter Pants

Waterproof pants with quilted lining and broad reflectors. Windproof, waterproof, breathable, fully taped seams, and with water-repellent finish.



## DETAILS

Padded lining

Elasticated drawstring waist, safety press studs at waist

Full-length side zips, pockets with zip, shaped knees

Reflective piping trim in side seams and across legs

Clear reflectors on front and back

Adjustable leg width and length

The leg length can be shortened

## Waterproof Winter Pants Unisex

Style 95555 | XS-6XL | Slim fit



navy 5000    black 9000

**Outer material:** 100% polyester | **Finish:** BIONIC-FINISH®ECO (DWR)

**Lining:** 100% polyester | **Padding:** 100% polyester | **Membrane:** PU | **Seam:** Fully taped

**Water column pressure:** 20,000 mm | **Breathability:** 8,000 g/m<sup>2</sup>/24H | **Wind protection:** 5 / 5

**Laundry ready** | Replenishment guarantee





# Waterproof Tech Pants

Waterproof pants in improved material with broad reflectors for enhanced traffic safety. Windproof, waterproof, breathable, fully taped seams, and with water-repellent finish.



## DETAILS

Elasticated drawstring waist, safety press studs at waist

Full-length side zips, pockets with zip, shaped knees

Reflective piping trim in side seams and across legs

Clear reflectors on front and back

Adjustable leg width and length

The leg length can be shortened

## Waterproof Tech Pants Unisex

Style 40102 | XS-6XL | Slim fit



black  
9000

**Outer material:** 100% polyester | **Finish:** BIONIC-FINISH®ECO (DWR)  
**Lining:** 100% polyester | **Membrane:** PU | **Seam:** Fully taped  
**Water column pressure:** 15,000 mm | **Breathability:** 8,000 g/m<sup>2</sup>/24H  
**Wind protection:** 5 / 5 Laundry ready | Replenishment guarantee



# Tech Shell Jacket

Shell jacket in improved materials with broad reflectors for enhanced traffic safety. Windproof, waterproof, breathable, fully taped seams, and with water-repellent finish.



Shell jacket shown with quilted inner jacket

## DETAILS

Extra zip at front to attach and inner jacket, making it ideal as a 3in1 jacket

Improved fit for enhanced mobility

Detachable and adjustable hood large enough to fit a helmet

Two-way zip under storm flap, with water barrier

Ventilation under armpit

Several zip pockets

Inside storm cuffs

## Tech Shell Jacket Unisex

Style 40101-4 | XS-6XL | Regular fit



black	red
5000	4000

## Zip-In inner jackets:

Pile jacket, style 4900

Quilted jacket, style 5100

Fleece jacket, style 5300

Softshell jacket, style 5500

Quilted waistcoat, style 5900

(Separate purchase)

**Outer material:** 100% polyester | **Finish:** BIONIC-FINISH®ECO (DWR)

**Lining:** 100% polyester | **Membrane:** PU | **Seam:** Fully taped

**Water column pressure:** 15,000 mm | **Breathability:** 8,000 g/m<sup>2</sup>/24H

**Wind protection:** 5 / 5 | **Laundry ready** | **Replenishment guarantee**









# Rainwear

Rainwear with reflectors in high quality for heavy and continuous rain. The rainwear has a stylish design and is made of a light and flexible material that provides good mobility and protection from wind and weather. OEKO-TEX® certified fabric.



## Rain Coat Unisex

Style 99190 | XS-6XL | Regular fit



navy	red
5000	4000



## DETAILS

Two-way zip in front, large chest pockets with zip, collar with hood, ventilation on the back and in the armhole, and adjustable sleeve ends

The raincoat goes down the middle of the thighs, making it suitable for cycling personnel



## DETAILS

Elasticated drawstring waistband

Adjustable leg end with zip opening on the side under water barrier and Velcro straps at the ankles

Reflectors on the legs

### Rain Pants Unisex

Style 95190 | XS-6XL | Regular fit



navy	red
5000	4000

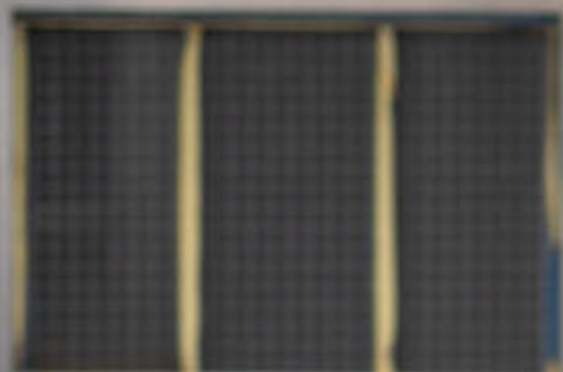
**Outer material:** 50% polyester, 50% PU | **Lining:** 100% polyester | **Fabric:** OEKO-TEX® certified

**Membrane:** PU Coating Face | **Seam:** Welded seams

**Water column pressure:** 10,000 mm | **Breathability:** 500 g/m<sup>2</sup>/24H | **Wind protection:** 4 / 5

Laundry ready

MEIERIET



1003







# Tech Softshell

Windproof, water-repellent for light rain. Fleece on the inside ensures increased comfort and better temperature regulation than a normal softshell. The jacket has increased UV light fastness for employees who are exposed to sunlight (e.g. left arm by the driver's window).

## DETAILS

Detachable sleeves and epaulettes

Zip pockets

Breast pockets with zip and ID badge holder

Reflective piping trim on shoulders and sleeves

### Tech Softshell Jacket

Style 99055 | XS-8XL | Slim fit



navy	black
5000	9000



**Softshell:** 100% polyester | **Finish:** BIONIC-FINISH®ECO (DWR)

**Membrane:** Laminated TPU | **Water column pressure:** 3,000 mm | **Breathability:** 3,000 g/m<sup>2</sup>/24H

**Wind protection:** 4 / 5 | **Laundry ready** | **Replenishment guarantee**

# Lightweight Thermal Jacket

Close-fitting and lightweight thermal jacket in durable fabric. The jacket is ideal as a middle layer as it is light, isolating and compact when folded.

## DETAILS

Perspiration control stretch fabric in side pieces and on sleeves

Tone-on-tone reflectors at pockets, collar and back

Quilted front and back piece

Side pockets with zip

### Thermal Jacket Unisex

Style 99070 | XS-6XL | Slim fit



black  
9000



**Outer material (body):** 100% polyamide | **Padding:** 100% polyester

**Sleeves:** 100% polyester (tricot)

**Laundry ready**







# Classic Shell Jackets

Light and slim fit shell jackets. The jackets are windproof and waterproof, breathable, water-repellent and with fully taped seams.

## DETAILS

Tone-on-tone reflectors

Storm flap and water barrier over two-way zip

Adjustable, detachable storm hood

Several zip pockets

Elasticated inner cuffs

Drawstring with drawstring stopper at hem

Unisex style with elongated hem and women's style with three-quarters length



**Classic Shell Jacket Unisex**  
Style 99065 | XS-6XL | Slim fit



navy 5000  
black 9000

**Classic Shell Jacket Women**  
Style 99064 | XS-6XL | Slim fit



navy 5000  
black 9000

**Outer material:** 100% polyester | **Finish:** BIONIC-FINISH®ECO (DWR) | **Fabric:** OEKO-TEX® certified

**Lining:** 100% polyester | **Membrane:** PU | **Seam:** Fully taped

**Water column pressure:** 20,000 mm | **Breathability:** 10,000 g/m<sup>2</sup>/24H | **Wind protection:** 4 / 5

**Laundry ready**

# Coach Jacket

American-inspired coach jacket in a retro classic cut made from exceptionally durable and OEKO-TEX® certified fabric

## DETAILS

Quilted lining with light padding

Dirt- and water repellent finish

Tone-on-tone reflectors on back and sleeves

Zip pockets under flaps

Large inside pockets



### Coach Jacket

Style 99060 | XS-6XL | Regular fit



navy  
5000

**Outer material:** 100% nylon | **Lining:** 100% polyester | **Fabric:** OEKO-TEX® certified

**Padding:** 100% polyester | **Coating:** PU | **Seam:** Fully taped

**Water column pressure:** 5,000 mm | **Breathability:** 5,000 g/m<sup>2</sup>/24H | **Wind protection:** 5 / 5

# URBAN

## Same Style Summer & Winter

The Urban jacket range is designed with a focus on quality, fit and durability, for the personnel to look presentable every day.

The jackets are available for men and women in a summer and winter version. Both styles have the same light and sporty look, which enables the same uniform regardless of the season.

### VERSATILE WORKWEAR

The jackets can serve many purposes and cater to different industries and job functions.

The jackets are particularly used in the transport industry, the service sectors, and other industries with customer contact, where workwear is a visible and central part of the job.

### IN ALL SIZES

The women's styles are available in sizes XS-6XL, while the men's go up to 8XL. In this way, all employees are ensured a good fit and can wear the same jackets regardless of size and season.







**URBAN**



# Functionality and Design

The Urban range features many details that make the jackets both stylish and functional.

## DETACHABLE HOOD

Detachable hood that can be integrated in the collar and adjusted with string stoppers.

## SHOULDER STRAPS (EXTRAS)

Style 921 | One size

	
navy	black
5000	9000

## ZIP POCKETS

2 slant pockets and 2 chest pockets on the front.

## DISCRETE REFLECTORS

On both front, back and sleeves for enhanced visibility.

## INSIDE POCKETS

Including concealed pocket with zip to protect belongings.

## TWO-WAY ZIP

Two-way zip on front under storm flap.

## CUFFS

Adjustable sleeves with elasticated inner cuffs.

## LOGO PLACEMENT

Inside zip for flexible placement of logo.

## ADJUSTABLE HEM

Adjustable hem with string stoppers.






# Urban Winter Jackets


Winter jackets for men and women with quilted lining. The jackets are windproof and waterproof, breathable, water-repellent, and with fully taped seams.



**Urban Winter Jacket Women**  
Style 99024 | XS-6XL | Female cut

		
navy 5000	black 9000	blue melange 5500

**Urban Winter Jacket Men**  
Style 99025 | XS-8XL | Regular fit

		
navy 5000	black 9000	blue melange 5500

**Outer material:** 100% polyester | **Finish:** BIONIC-FINISH®ECO (DWR)  
**Lining:** 100% polyester | **Padding:** 100% polyester | **Membrane:** PU-laminate | **Seam:** Fully taped  
**Water column pressure:** 10,000 mm | **Breathability:** 5,000 g/m<sup>2</sup>/24H | **Wind protection:** 4 / 5  
**Laundry ready** | **Replenishment guarantee**




# Urban Summer Jackets

Shell jackets for men and women. The jackets are windproof and waterproof, breathable, water-repellent, and with fully taped seams.



**Urban Summer Jacket Women**  
Style 99020 | XS-6XL | Female cut

	
navy	black
5000	9000

**Urban Summer Jacket Men**  
Style 99021 | XS-8XL | Regular fit

	
navy	black
5000	9000

**Outer material:** 100% polyester | **Finish:** BIONIC-FINISH®ECO (DWR)  
**Lining:** 100% polyester | **Membrane:** PU-laminate | **Seam:** Fully taped  
**Water column pressure:** 10,000 mm | **Breathability:** 5,000 g/m<sup>2</sup>/24H | **Wind protection:** 4 / 5  
**Laundry ready** | **Replenishment guarantee**









# 3-in-1 Tech Coats

Deluxe coat in light 3-layer material with non-crease effect .  
Detachable quilted inner jacket with zip pockets in ultra light nylon.  
The coats are wind and waterproof with fully taped seams, and are especially suitable for employees wearing uniform and suit.  
OEKO-TEX® certified fabric.

## DETAILS

Large detachable hood with space for e.g. an up-do hairstyle or hat for pilot and stewardess

Large zip pockets with magnetic press studs

PU trim on front and pockets

Easy-grip zip, so pockets can be operated with gloves

Inside detachable thermal jacket can be used separately and takes up minimal space when packed

### Tech Coat Women

Style 99062 | XS-6XL | Regular fit



black  
9000





Jacket shown with detachable thermal jacket inside

## EXTRAS

The inner and detachable thermal jacket can be replaced with a heavier thermal jacket with Thinsulate® padding (style 5700 and 5800 for men and women respectively). Beneficial for employees with stationary work functions in cold weather.

### Tech Coat Men

Style 99063 | XS-6XL | Regular fit



black  
9000

**Outer material (shell):** 100% polyester | **Finish:** BIONIC-FINISH®ECO (DWR)

**Lining:** 100% polyester | **Inner jacket:** 100% nylon | **Padding:** 100% polyester

**Fabric:** OEKO-TEX® certified | **Seam:** Fully taped

**Water column pressure:** 15,000 mm | **Breathability:** 2.800 g/m<sup>2</sup>/24H | **Wind protection:** 4 / 5

**Replenishment guarantee**







# Thinsulate® Thermal Jackets

Quilted thermal jackets with zip pockets and strong thinsulate® padding, which makes them especially suitable for winter use and stationary work. The jackets are designed to be zipped into the Tech Coats (style 99062 and 99063), but can also be worn as stand-alone jackets.



**Thermal Jacket w. Thinsulate® Unisex**  
Style 5700 | XS-6XL | Regular fit



black  
9000



**Thermal Jacket w. Thinsulate® Women**  
Style 5800 | XS-6XL | Regular fit



black  
9000

Outer material: 100% nylon | Lining: 100% nylon | Padding: Thinsulate®

**3M**  
**Thinsulate**  
INSULATION

# Work Socks

Xplor work socks are developed with a focus on employees with long working days and many steps. The inner layer and socks are crucial for comfort and body temperature.



## Work Socks with Wool Frotté

Thick wool frotté sock with reinforcement on areas exposed to extra wear. The combination of merino wool with other fibres ensures a sock with high abrasion resistance, which is quick-drying, moisture-wicking and temperature-regulating.

### Style 500 | Wool Frotté | Heavy

64% merino wool, 32% polyamide, 4% elastane



## Work Socks with Dri-release®

Dri-release® sock which is both moisture-wicking, quick-drying, odour-eliminating and with built-in compression points.

### Style 501 | Dri-release® | Light

73% dri-release, 18% Lycra, 5% polyamide, 4% elastane

### Style 502 | Dri-release® | Heavy

85% dri-release, 7% Lycra, 4% polyamide, 4% elastane



## Work Socks with Low Cut

Work sock with extra reinforcement on the inside of the sole, toe and heel. Developed for maximum comfort and has good temperature and humidity regulating functions.

### Style 503 | Low Cut | Light

39% polypropylene, 24% acrylic, 24% merino wool, 11% polyamide, 1% Lycra, 1% elastane



## Business socks

Classic quality cotton socks.

### Style 505 | Business | Light

75% cotton, 23% polyamide, 2% elastane

All styles are available in size: 36/39, 40/43, 44/47 and 48/51.

Logo woven into socks: min. 1,000 pcs / 100 per size.

# Thermal Underwear

Xplor thermal underwear has been developed with a focus on those who think that wool scratches, but who still want the insulating and sweat-transpiring effect of wool.



**Thermal Underwear**  
Style 600, 601, 602, 603  
XS-6XL | Regular fit

■  
black  
9000



1. Style 602  
Thermal Long  
Sleeves w. Crew  
Neck
2. Style 603  
Thermal Long  
Sleeves w. Turtleneck
3. Style 600  
Thermal Long Johns  
Unisex
4. Style 601  
Thermal Long Johns  
w. Fly

**Outer material:** 45% cotton, 30% polyacrylic, 14% wool, 11% polyamide  
**Laundry ready**







# Product Overview

## Jackets

99084	Women's Mono Parka Shell Jacket	page 10
99081	Unisex Mono Shell Jacket	page 11
99044-4	Care Shell Jacket Women	page 18
99045-4	Care Shell Jacket Unisex	page 18
5200	Quilted Jacket Women	page 24
5100	Quilted Jacket Unisex	page 25
5900	Quilted Waistcoat Unisex	page 25
5300	Fleece Jacket Unisex	page 26
5400	Fleece Jacket Women	page 26
5500	Softshell Jacket Unisex	page 28
4800	Pile Jacket Women	page 30
4900	Pile Jacket Unisex	page 30
40101-4	Tech Shell Jacket Unisex	page 34
99190	Rain Coat Unisex	page 36
99055	Tech Softshell Jacket	page 40
99070	Thermal Jacket Unisex	page 41
99064	Classic Shell Jacket Women	page 44
99065	Classic Shell Jacket Unisex	page 44
99060	Coach Jacket	page 45
99024	Urban Winter Jacket Women	page 50
99025	Urban Winter Jacket Men	page 50
99020	Urban Summer Jacket Women	page 51
99021	Urban Summer Jacket Men	page 51
99062	Tech Coat Women	page 54
99063	Tech Coat Men	page 55
5700	Thermal Jacket w. Thinsulate® Unisex	page 57
5800	Thermal Jacket w. Thinsulate® Women	page 57

## Pants

95580	Unisex Mono Shell Trousers	page 12
95580-1	Unisex Mono shell Trousers Extra Long	page 12
95541	Waterproof Pants Unisex	page 19
95541-1	Waterproof Pants Extra Long Unisex	page 19
95555	Waterproof Winter Pants Unisex	page 32
40102	Waterproof Tech Pants Unisex	page 33
95190	Rain Pants Unisex	page 37

## Hoods

944	Reflective Hood for style 99044-4	page 21
945	Reflective Hood for style 99045-4	page 21
9180	Mono Reflective Hood for style 99084	page 21
9181	Mono Reflective Hood for style 99081	page 21
9280	Mono Hi-Vis Hood for style 99084	page 21
9281	Mono Hi-Vis Hood for style 99081	page 21

## Socks

500	Wool Frotté Work Socks	page 58
501	Work Socks Dri-release® Light	page 58
502	Work Socks Dri-release® Heavy	page 58
503	Work Socks Low Cut	page 58
505	Business socks	page 58

## Thermal Underwear

600	Thermal Long Johns Unisex	page 59
601	Thermal Long Johns w. Fly	page 59
602	Thermal Long Sleeves w. Crew Neck	page 59
603	Thermal Long Sleeves w. Turtleneck	page 59

**xplor**

*One company fits all.*  
**DE BONNET**

De Bonnet Corporate Clothing  
Takkebijsters 8a  
4817 BL , Breda  
Tel nr : 0031-(0)76-5991999  
E-mail : [info@debonnet.nl](mailto:info@debonnet.nl)  
Web : [www.debonnet.nl](http://www.debonnet.nl)